

UK Business Angels Report 2020

Current climate for UK business angels¹

57%
made an investment between April and July 2020



46%
expect to make new investments during 2020/2021



72%
are confident about the future growth in value of their portfolio

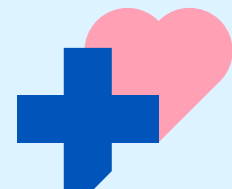


54%
had greater engagement with their portfolio companies during the current pandemic



Top investment sectors¹

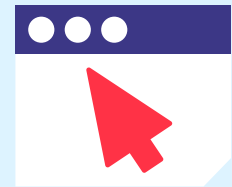
31%
Healthcare



26%
Biotech, life sciences and pharmaceuticals



24%
Software as a service



19%
Fintech

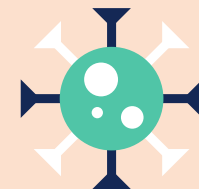


Current challenges and barriers facing angel investors¹

45%
said economic uncertainty



32%
said the impact of Covid-19



26%
said selecting / finding the right opportunities



26%
said lack of liquidity / exit opportunities



The profile of UK business angels²

21%
are over 65



85%
are over 45



53%
have more than 5 years investment experience



£45k
Median initial investment³



Median follow on investment³
£25k

13%
are women

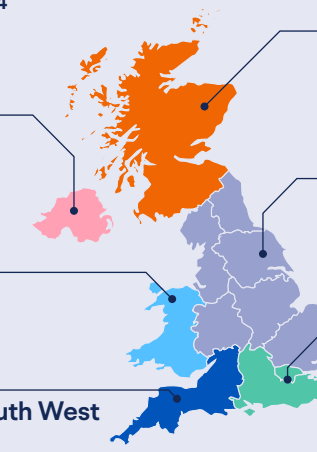


Where business angels are based⁴

1%
are based in Northern Ireland

1%
are based in Wales

8%
are based in the South West



6%
are based in Scotland

20%
are based in the rest of England

57%
are based in London or the South East

¹ based on responses to our business angels survey conducted Apr-July 2020

² based on responses to our business angels survey conducted Sept-Nov 2019

³ for the tax year 2018/19

⁴ 7% are based outside of the UK or prefer not to say